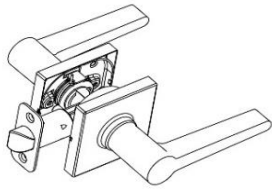
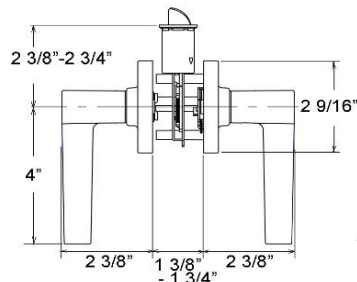


BETTER HOME PRODUCTS

TREASURE ISLAND COLLECTION SPECIFICATIONS

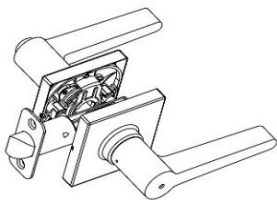


PASSAGE SET

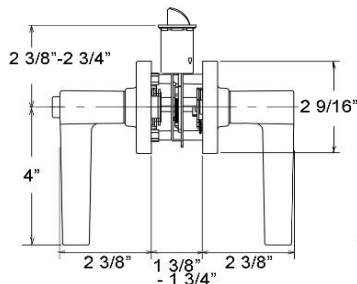


BHP ITEM# 51115SN - Satin Nickel Finish
51144BLK - Matte Black Finish
51188CH - Chrome Finish

Grade III tubular passage set. All metal components
Door Prep - Crossbore 2 1/8", Edge Bore 1", Latch Face 1"x2 1/4"
Door Thickness - 1 3/8" to 1 3/4"
Function: Both levers always free
Strike - Full lip radius corner standard. Other options available
Latch - 1/2" throw bolt, 2 3/8" or 2 3/4" backset adjustable. Radius corner face plate standard. Other options available
Door Handing - Non handed

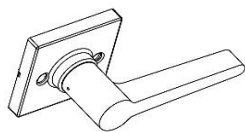


PRIVACY SET

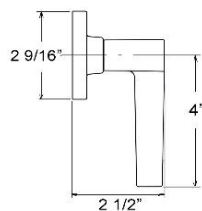


BHP ITEM# 51215SN - Satin Nickel Finish
51244BLK - Matte Black Finish
51288CH - Chrome Finish

Grade III tubular privacy set. All metal components
Door Prep - Crossbore 2 1/8", Edge Bore 1", Latch Face 1"x2 1/4"
Door Thickness - 1 3/8" to 1 3/4"
Function - Outside lever locked by push button inside, inside lever always free. Outside lever also can be opened by emergency key
Strike - Full lip radius corner standard. Other options available
Latch - 1/2" throw bolt, 2 3/8" or 2 3/4" backset adjustable. Radius corner face plate standard. Other options available
Door Handing - Non handed

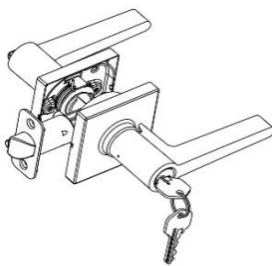


DUMMY LEVER

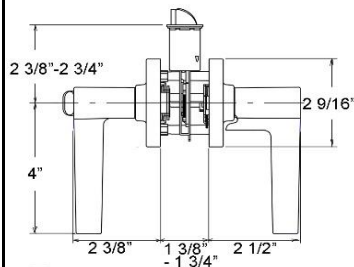


BHP ITEM# 51315SN - Satin Nickel Finish
51344BLK - Matte Black Finish
51388CH - Chrome Finish

Grade III dummy lever. All metal components
Door Prep - Surface mounted with 2 exposed mounting screws. No door prep needed
Door Thickness - greater than 1"
Function: Active lever, for doors where only a pull / push is required.
Door Handing - Non handed

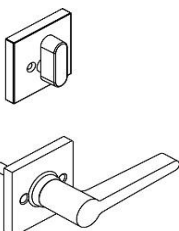


ENTRY SET

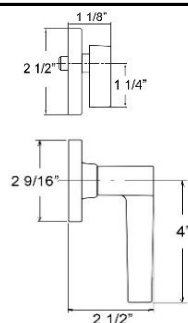


BHP ITEM# 51515SN - Satin Nickel Finish
51544BLK - Matte Black Finish
51588CH - Chrome Finish

Grade III tubular Lever-Lever entry set. All metal components
Door Prep - Crossbore 2 1/8", Edge Bore 1", Latch Face 1"x2 1/4"
Door Thickness - 1 3/8" to 1 3/4"
Function: Both sides locked or unlocked by key out side or center turn piece inside
Cylinder - 5 pins, Kwikset® KW 1 keyway
Strike - Full lip round radius standard. Other options available
Latch - 1/2" throw dead latch, 2 3/8" or 2 3/4" backset adjustable. Radius corner face plate standard. Other options available
Door Handing - Non handed



TRIM LEVER



BHP ITEM# 51915SN - Satin Nickel Finish
51944BLK - Matte Black Finish
51988CH - Chrome Finish

Grade III handleset trim lever, works for all BHP offering handlesets. All metal components
Door Prep - See BHP handleset door prep
Door Thickness - 1 3/8" to 1 3/4"
Function: Lever always free
Door Handing - Non handed
 ** Packed with a square shape style match deadbolt backplate for handleset